

PART OF THE S.W. 1/4 OF SEC. 27, T.7N., R.1E., S.L.B. & M.

76

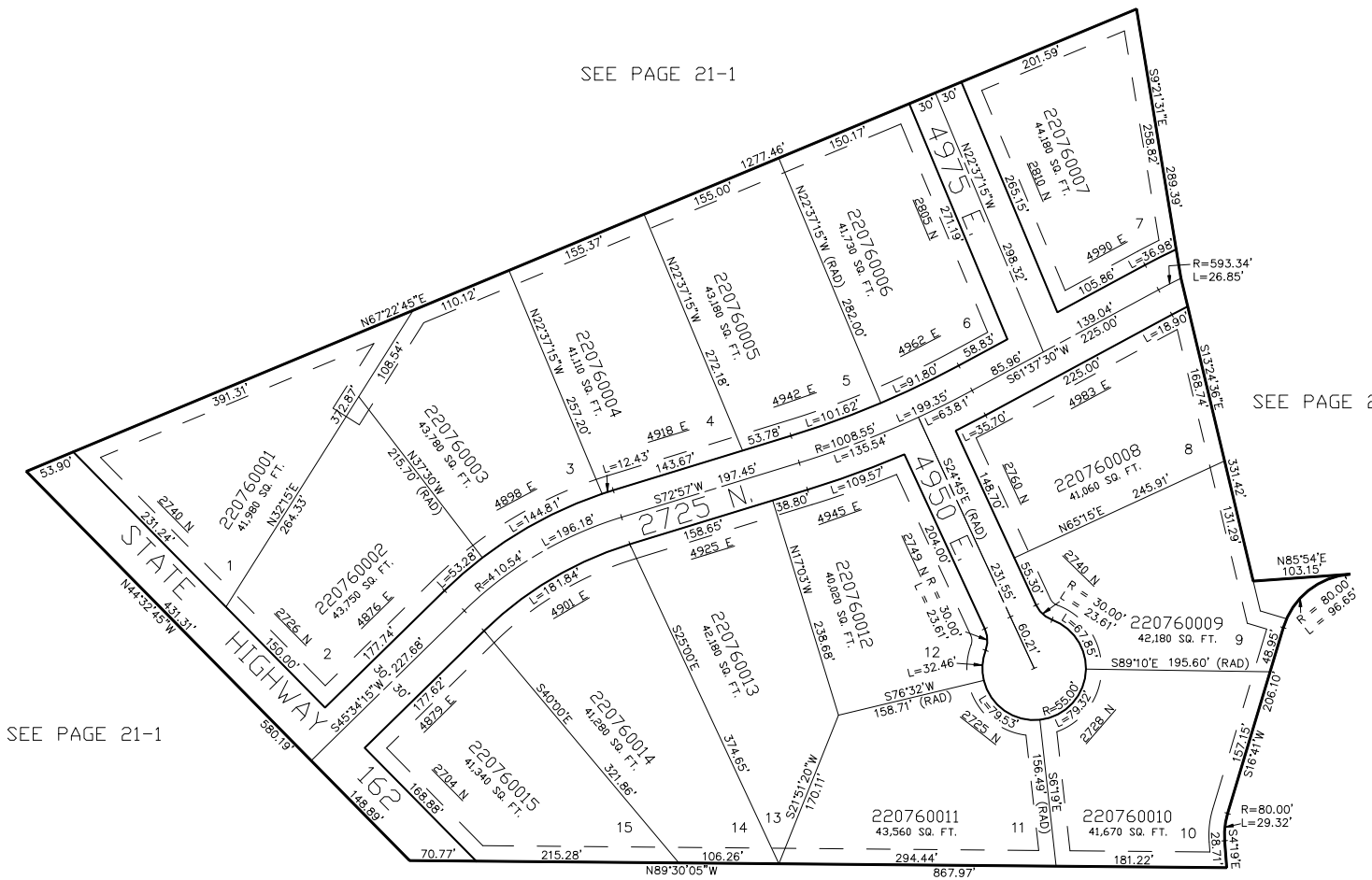
EDEN MEADOWS SUBDIVISION

IN WEBER COUNTY

TAXING UNIT: 317

SCALE 1" = 100'

SEE PAGE 21-1



SEE PAGE 21-1

SEE PAGE 46

16.5' UTILITY & DRAINAGE EASEMENTS EACH
SIDE OF PROPERTY LINES AS INDICATED
BY DASHED LINES EXCEPT AS OTHERWISE
SHOWN.

FOR COMPLETE ENG DATA SEE
ORIGINAL DEDICATION PLAT IN
BOOK 21, PAGE 88 OF RECORDS.